

Design Patterns and Frameworks for Object-oriented Communication Systems

Douglas C. Schmidt

<http://www.cs.wustl.edu/~schmidt/>

schmidt@cs.wustl.edu

Washington University, St. Louis

1

Motivation

- Developing *efficient, robust, extensible, and reusable* communication software is hard
- It is essential to understand successful techniques that have proven effective to solve common development challenges
- *Design patterns* and *frameworks* help to capture, articulate, and instantiate these successful techniques

2

Observations

- Developers of communication software confront recurring challenges that are largely application-independent
 - e.g., service initialization and distribution, error handling, flow control, event demultiplexing, concurrency control
- Successful developers resolve these challenges by applying appropriate *design patterns*
- However, these patterns have traditionally been either:
 1. *Locked inside heads of expert developers*
 2. *Buried in source code*

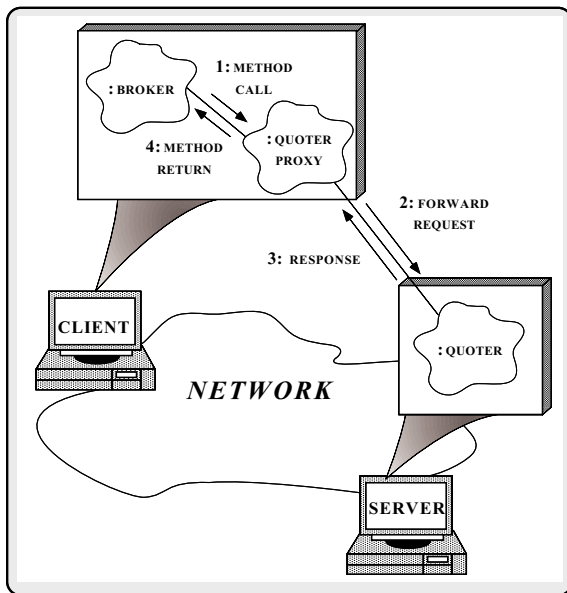
3

Design Patterns

- Design patterns represent *solutions* to *problems* that arise when developing software within a particular *context*
 - i.e., “Patterns == problem/solution pairs in a context”
- Patterns capture the static and dynamic *structure* and *collaboration* among key *participants* in software designs
 - They are particularly useful for articulating how and why to resolve *non-functional forces*
- Patterns facilitate reuse of successful software architectures and designs

4

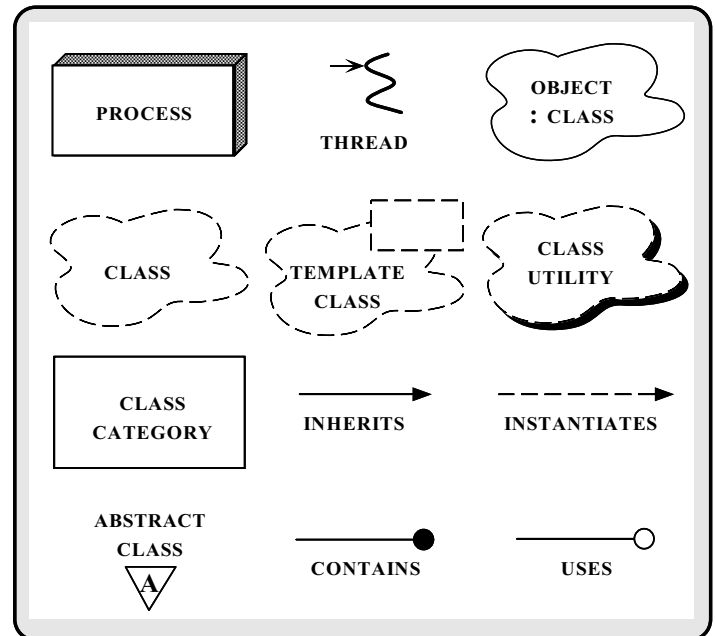
Proxy Pattern



- *Intent*: provide a surrogate for another object that controls access to it

5

Graphical Notation



6

More Observations

- Reuse of patterns alone is not sufficient
 - Patterns enable reuse of architecture and design knowledge, but not code (directly)
- To be productive, developers must also reuse detailed designs, algorithms, interfaces, implementations, etc.
- Application *frameworks* are an effective way to achieve broad reuse of software

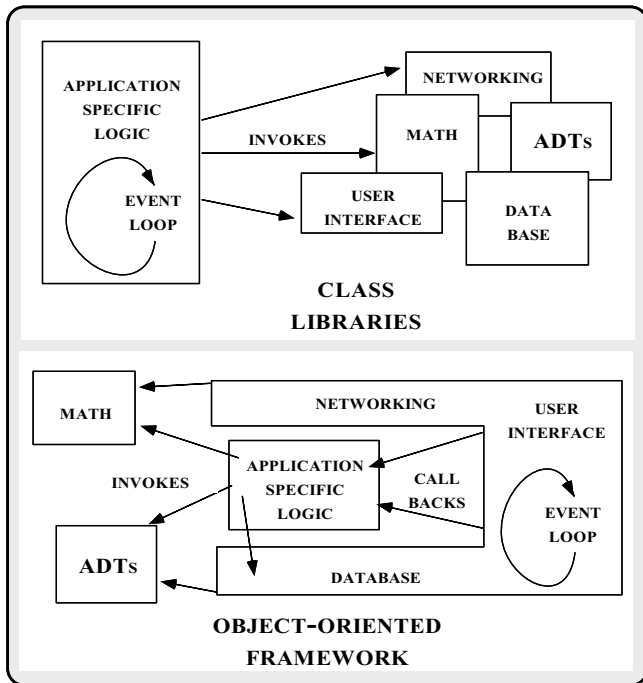
7

Frameworks

- A framework is:
 - “An integrated collection of components that collaborate to produce a reusable architecture for a family of related applications”
- Frameworks differ from conventional class libraries:
 1. Frameworks are “semi-complete” applications
 2. Frameworks address a particular application domain
 3. Frameworks provide “inversion of control”
- Typically, applications are developed by *inheriting* from and *instantiating* framework components

8

Differences Between Class Libraries and Frameworks



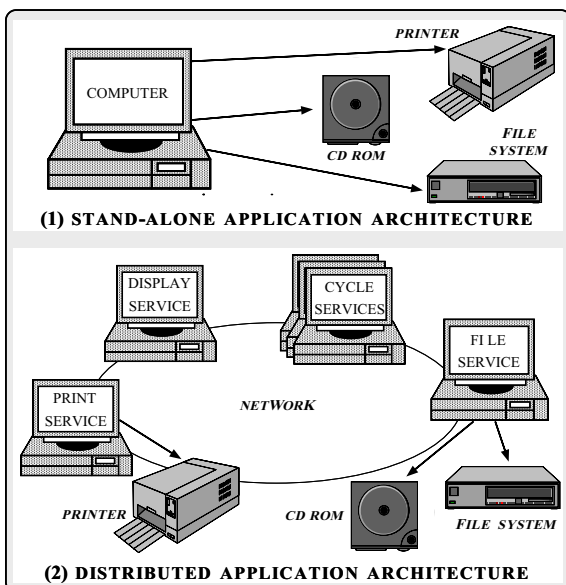
9

Tutorial Outline

- Outline key challenges for developing communication software
- Present the key reusable design patterns in a distributed medical imaging system
 - Both single-threaded and multi-threaded solutions are presented
- Discuss lessons learned from using patterns on production software systems

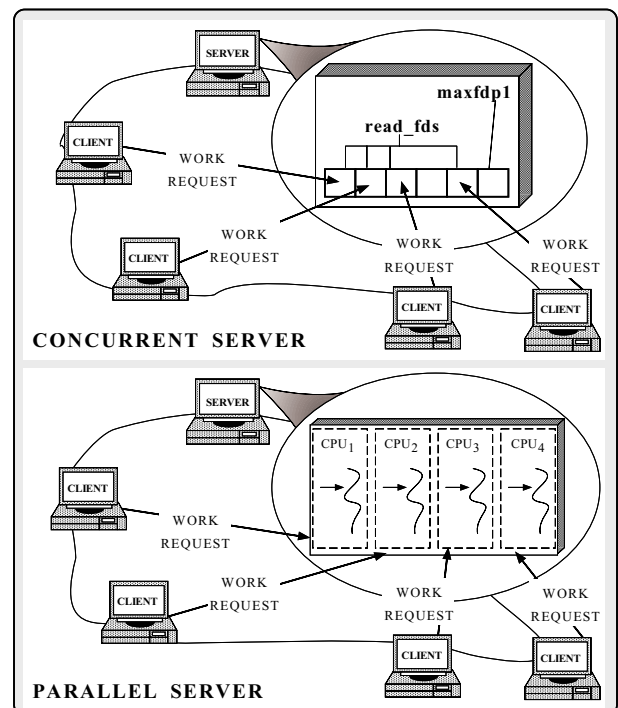
10

Stand-alone vs. Distributed Application Architectures



11

Concurrency vs. Parallelism



12

Sources of Complexity

- Distributed application development exhibits both *inherent* and *accidental* complexity
- *Inherent complexity* results from fundamental challenges, *e.g.*,
 - Distributed systems
 - ▷ *Latency*
 - ▷ *Error handling*
 - ▷ *Service partitioning and load balancing*
 - Concurrent systems
 - ▷ *Race conditions*
 - ▷ *Deadlock avoidance*
 - ▷ *Fair scheduling*
 - ▷ *Performance optimization and tuning*

13

Sources of Complexity (cont'd)

- *Accidental complexity* results from limitations with tools and techniques, *e.g.*,
 - Low-level tools
 - ▷ *e.g.*, Lack of type-secure, portable, re-entrant, and extensible system call interfaces and component libraries
 - Inadequate debugging support
 - Widespread use of *algorithmic* decomposition
 - ▷ Fine for *explaining* network programming concepts and algorithms but inadequate for *developing* large-scale distributed applications
 - Continuous rediscovery and reinvention of core concepts and components

14

OO Contributions

- Concurrent and distributed programming has traditionally been performed using low-level OS mechanisms, *e.g.*,
 - *fork/exec*
 - *Shared memory*
 - *Signals*
 - *Sockets and select*
 - *POSIX pthreads, Solaris threads, Win32 threads*
- OO *design patterns* and *frameworks* elevate development to focus on application concerns, *e.g.*,
 - *Service functionality and policies*
 - *Service configuration*
 - *Concurrent event demultiplexing and event handler dispatching*
 - *Service concurrency and synchronization*

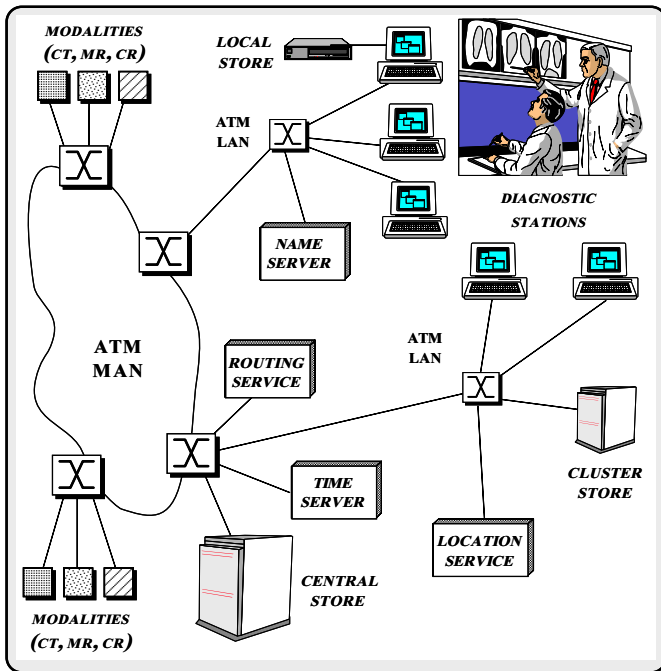
15

Distributed Medical Imaging Example

- This example illustrates the reusable *design patterns* and *framework* components used in an OO architecture for a *distributed medical imaging system*
- Application clients uses *Blob Servers* to store and retrieve medical images
- Clients and Servers communicate via a connection-oriented transport protocol
 - *e.g.*, TCP/IP, IPX/SPX, TP4

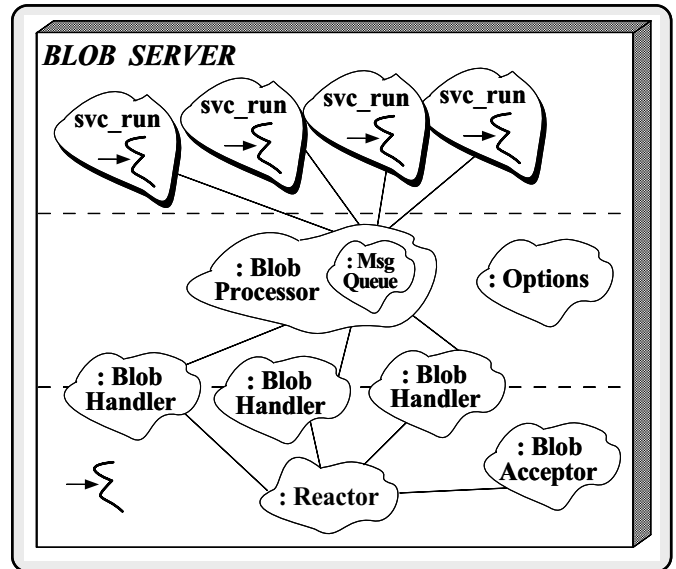
16

Distributed Electronic Medical Imaging Architecture



17

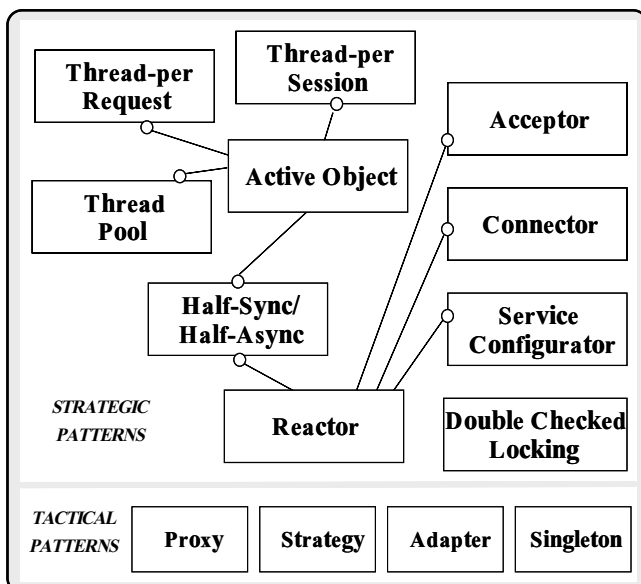
Architecture of the Blob Server



- * Manage short-term and long-term blob persistence
- * Respond to queries from Blob Locators

18

Design Patterns in the Blob Server



19

Tactical Patterns

- Proxy
 - “Provide a surrogate or placeholder for another object to control access to it”
- Strategy
 - “Define a family of algorithms, encapsulate each one, and make them interchangeable”
- Adapter
 - “Convert the interface of a class into another interface client expects”
- Singleton
 - “Ensure a class only has one instance and provide a global point of access to it”

20

Concurrency Patterns

- *Reactor*
 - “Decouples event demultiplexing and event handler dispatching from application services performed in response to events”
- *Active Object*
 - “Decouples method execution from method invocation and simplifies synchronized access to shared resources by concurrent threads”
- *Half-Sync/Half-Async*
 - “Decouples synchronous I/O from asynchronous I/O in a system to simplify concurrent programming effort without degrading execution efficiency”
- *Double-Checked Locking Pattern*
 - “Ensures atomic initialization of objects and eliminates unnecessary locking overhead on each access”

21

Concurrency Architecture Patterns

- *Thread-per-Request*
 - “Allows each client request to run concurrently”
- *Thread-Pool*
 - “Allows up to N requests to execute concurrently”
- *Thread-per-Session*
 - “Allows each client session to run concurrently”

22

Service Initialization Patterns

- *Connector*
 - “Decouples active connection establishment from the service performed once the connection is established”
- *Acceptor*
 - “Decouples passive connection establishment from the service performed once the connection is established”
- *Service Configurator*
 - “Decouples the behavior of network services from point in time at which services are configured into an application”

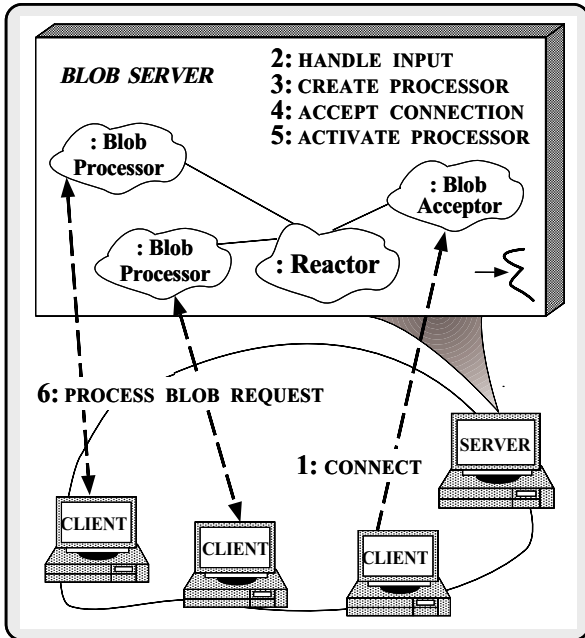
23

Concurrency Patterns in the Blob Server

- The following example illustrates the *design patterns* and *framework components* in an OO implementation of a concurrent Blob Server
- There are various architectural patterns for structuring concurrency in a Blob Server
 1. *Reactive*
 2. *Thread-per-request*
 3. *Thread-per-session*
 4. *Thread-pool*

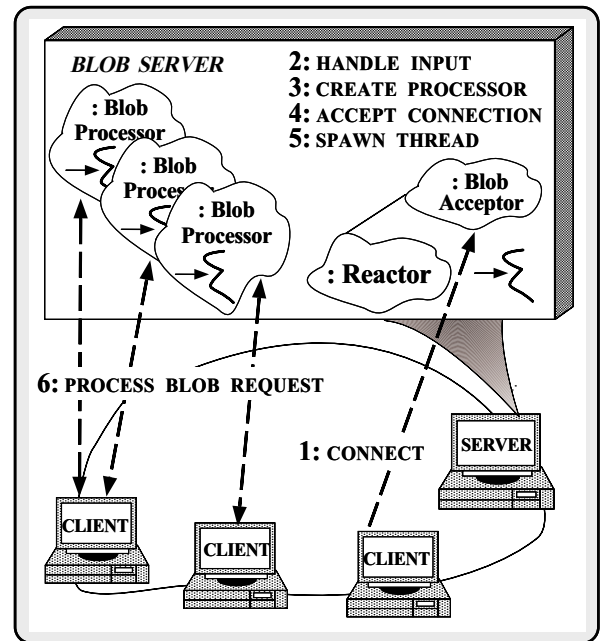
24

Reactive Blob Server Architecture



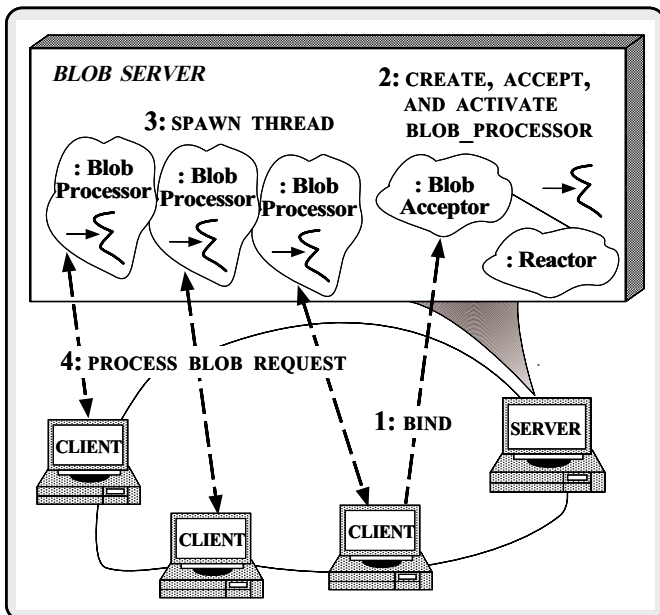
25

Thread-per-Request Blob Server Architecture



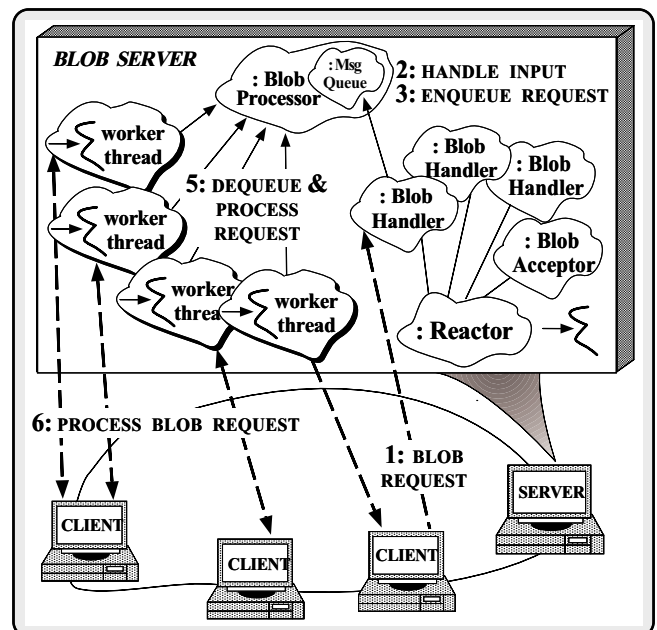
26

Thread-per-Session Blob Server Architecture



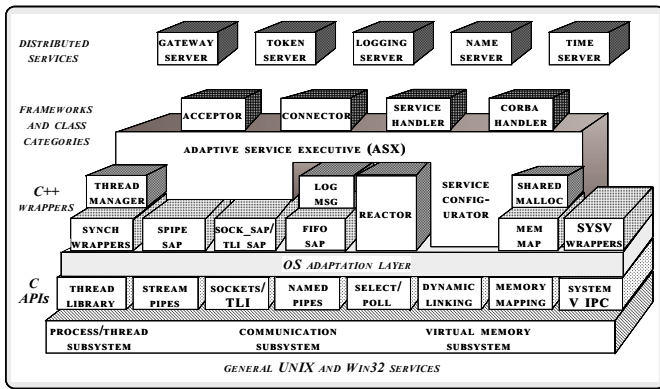
27

Thread-Pool Blob Server Architecture



28

The ADAPTIVE Communication Environment (ACE)



- A set of C++ wrappers and frameworks based on common design patterns

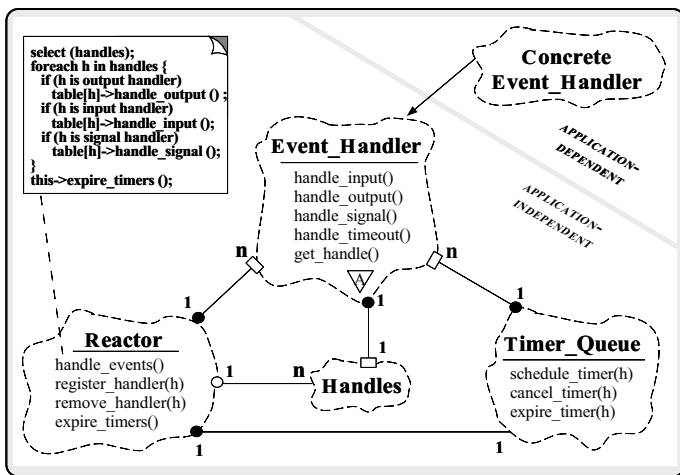
29

The Reactor Pattern

- *Intent*
 - “Decouples event demultiplexing and event handler dispatching from the services performed in response to events”
- This pattern resolves the following forces for event-driven software:
 - How to demultiplex multiple types of events from multiple sources of events efficiently within a single thread of control
 - How to extend application behavior without requiring changes to the event dispatching framework

30

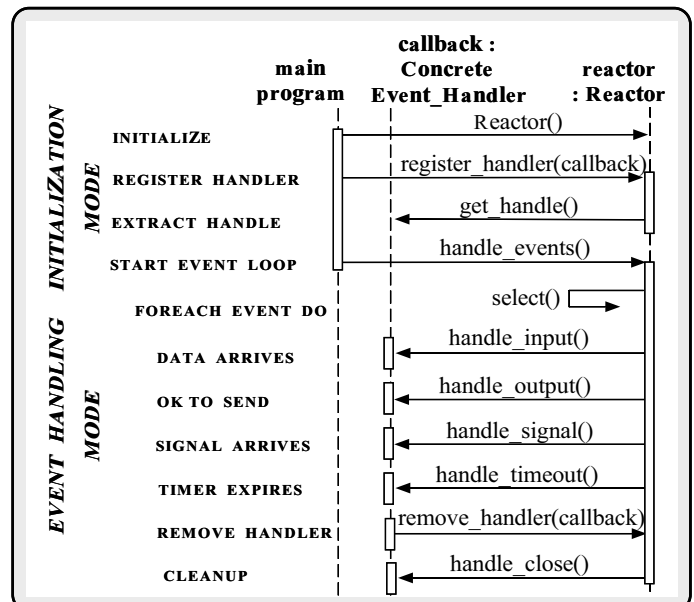
Structure of the Reactor Pattern



- Participants in the Reactor pattern

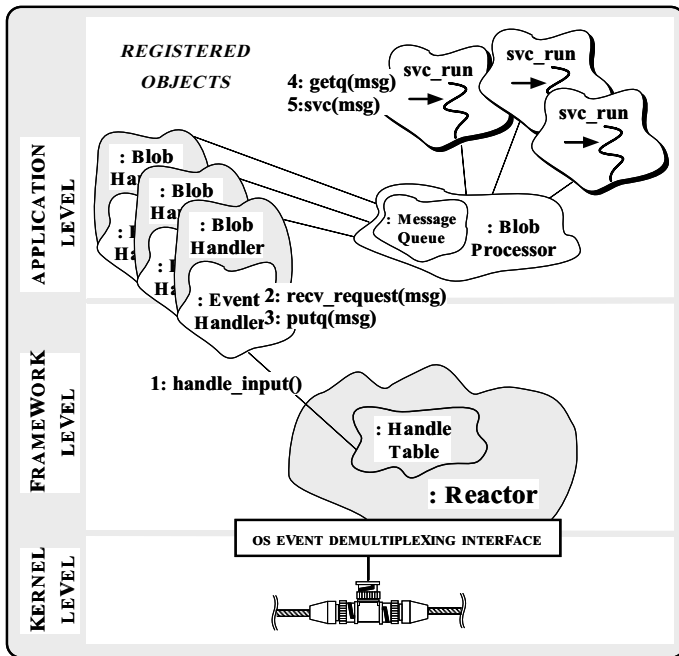
31

Collaboration in the Reactor Pattern



32

Using the Reactor in the Blob Server



33

The Blob_Handler Interface

- The `Blob_Handler` is the Proxy for communicating with clients
- Together with `Reactor`, it implements the asynchronous task portion of the Half-Sync/Half-Async pattern

```
// Reusable Svc Handler.
class Blob_Handler : public Event_Handler
{
public:
    // Entry point into Blob Handler.
    virtual int open (void) {
        // Register with Reactor to handle client input.
        Reactor::instance ()->register_handler
            (this, READ_MASK);
    }

protected:
    // Notified by Reactor when client requests arrive.
    virtual int handle_input (void);

    // Receive and frame client requests.
    int rcv_request (Message_Block &);

    SOCK_Stream peer_stream_; // IPC endpoint.
};
```

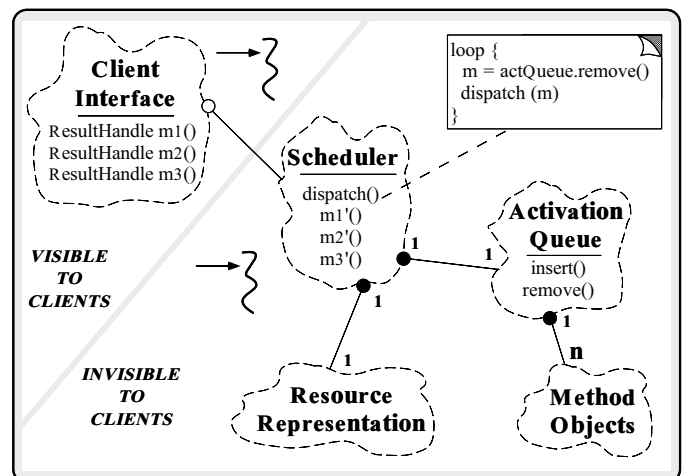
34

The Active Object Pattern

- *Intent*
 - “Decouples method execution from method invocation and simplifies synchronized access to shared resources by concurrent threads”
- This pattern resolves the following forces for concurrent communication software:
 - How to allow blocking read and write operations on one endpoint that do not detract from the quality of service of other endpoints
 - How to simplify concurrent access to shared state
 - How to simplify composition of independent services

35

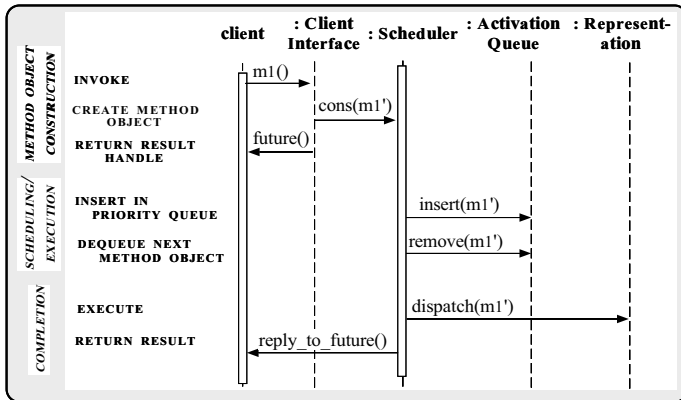
Structure of the Active Object Pattern



- The `Scheduler` determines the sequence that `Method Objects` are executed

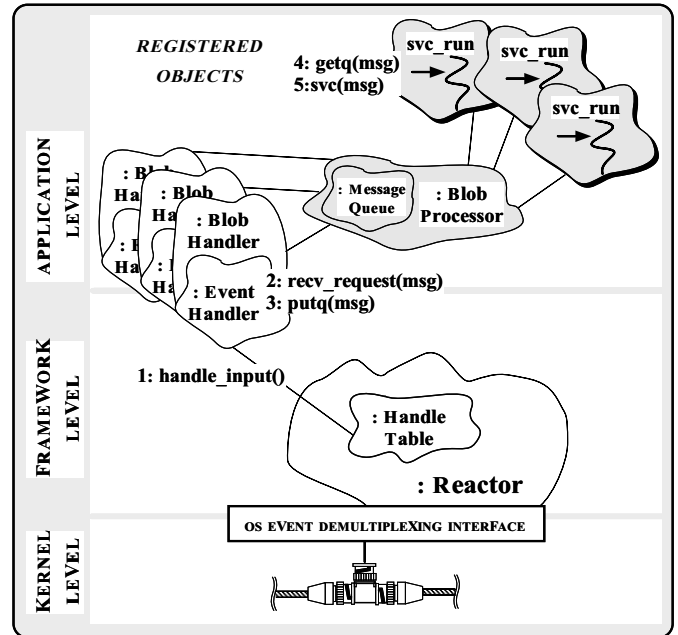
36

Collaboration in the Active Object Pattern



37

Using the Active Object Pattern in the Blob Server



38

The Blob_Processor Class

- Processes Blob requests using the "Thread-Pool" concurrency model
- Implement the synchronous task portion of the Half-Sync/Half-Async pattern

```
class Blob_Processor : public Task {
public:
    // Singleton access point.
    static Blob_Processor *instance (void);

    // Pass a request to the thread pool.
    virtual put (Message_Block *);

    // Event loop for the pool thread
    virtual int svc (int) {
        Message_Block *mb = 0; // Message buffer.

        // Wait for messages to arrive.
        for (;;) {
            getq (mb); // Inherited from class Task;
            // Identify and perform Blob Server
            // request processing here...
        }
    }
protected:
    Blob_Processor (void); // Constructor.
};
```

39

Using the Singleton Pattern

- The `Blob_Processor` is implemented as a Singleton that is created "on demand"

```
Blob_Processor *
Blob_Processor::instance (void) {
    // Beware race conditions!
    if (instance_ == 0) {
        instance_ = new Blob_Processor;
    }
    return instance_;
}
```

- Constructor creates the thread pool

```
Blob_Processor::Blob_Processor (void) {
    Thread_Manager::instance ()->spawn_n
        (num_threads, THR_FUNC (svc_run),
         (void *) this, THR_NEW_LWP);
}
```

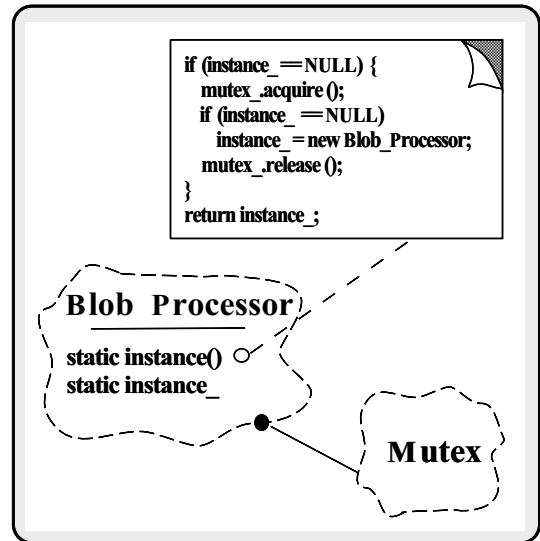
40

The Double-Checked Locking Pattern

- *Intent*
 - “Ensures atomic initialization of objects and eliminates unnecessary locking overhead on each access”
- This pattern resolves the following forces:
 1. *Ensures atomic initialization or access to objects, regardless of thread scheduling order*
 2. *Keeps locking overhead to a minimum*
 - e.g., only lock on first access
- Note, this pattern assumes atomic memory access...

41

Using the Double-Checked Locking Pattern for the Blob Server



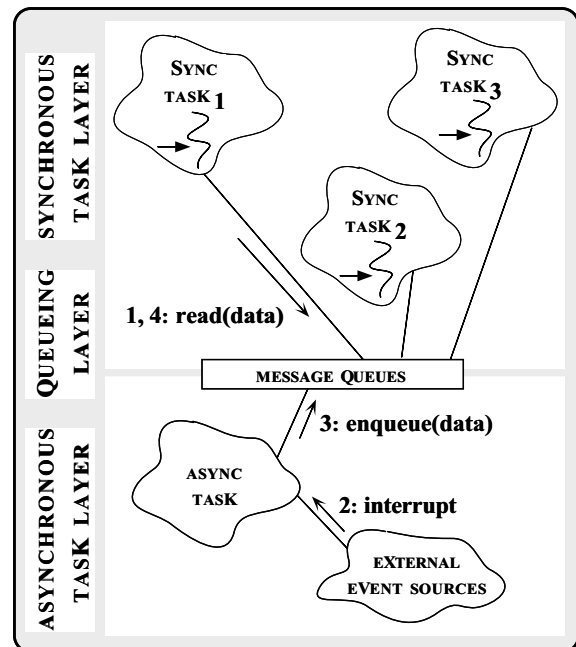
42

Half-Sync/Half-Async Pattern

- *Intent*
 - “Decouples synchronous I/O from asynchronous I/O in a system to simplify programming effort without degrading execution efficiency”
- This pattern resolves the following forces for concurrent communication systems:
 - *How to simplify programming for higher-level communication tasks*
 - ▷ These are performed synchronously
 - *How to ensure efficient lower-level I/O communication tasks*
 - ▷ These are performed asynchronously

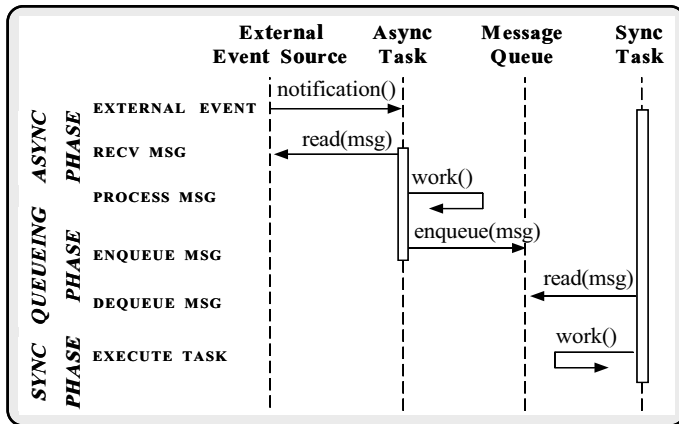
43

Structure of the Half-Sync/Half-Async Pattern



44

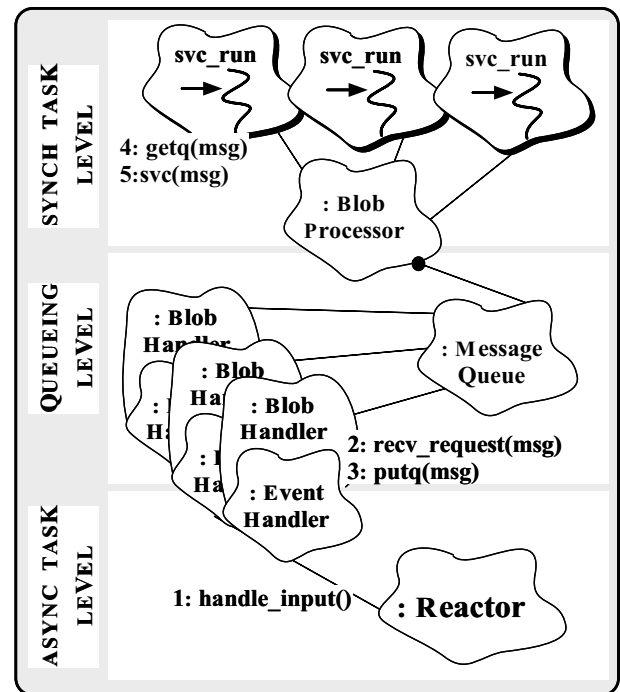
Collaborations in the Half-Sync/Half-Async Pattern



- This illustrates *input* processing (*output* processing is similar)

45

Using the Half-Sync/Half-Async Pattern in the Blob Server



46

Joining Async and Sync Tasks in the Blob Server

- The following methods form the boundary between the Async and Sync layers

```
int
Blob_Handler::handle_input (void)
{
    Message_Block *mb = 0;

    // Receive and frame message
    // (uses peer_stream_).
    rcv_request (mb);

    // Insert message into the Queue.
    Blob_Processor::instance ()->put (mb);
}

// Task entry point.
Blob_Processor::put (Message_Block *msg)
{
    // Insert the message on the Message_Queue
    // (inherited from class Task).
    putq (msg);
}
```

47

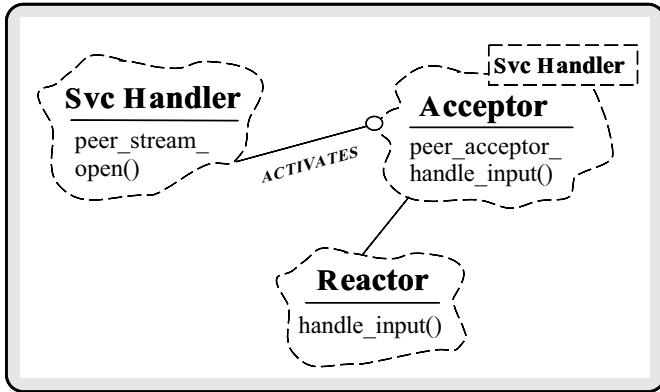
The Acceptor Pattern

- *Intent*
 - “Decouples passive initialization of a service from the tasks performed once the service is initialized”
- This pattern resolves the following forces for network servers using interfaces like sockets or TLI:
 1. How to reuse passive connection establishment code for each new service
 2. How to make the connection establishment code portable across platforms that may contain sockets but not TLI, or vice versa
 3. How to ensure that a passive-mode descriptor is not accidentally used to read or write data
 4. How to enable flexible policies for creation, connection establishment, and concurrency

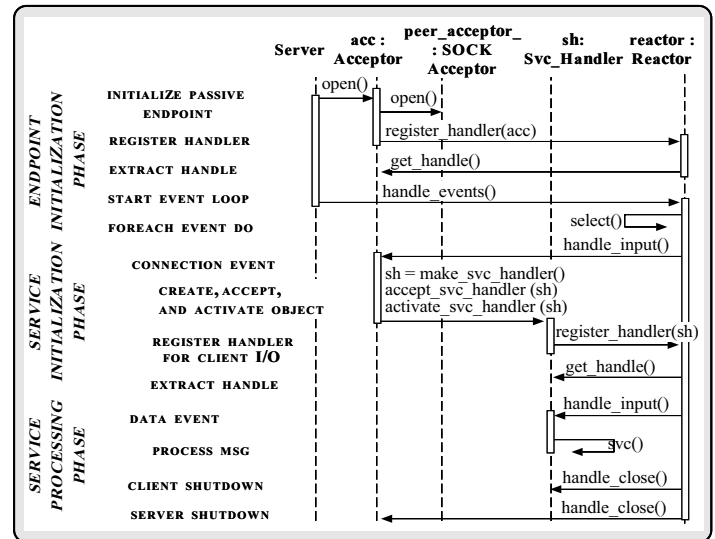
48

Collaboration in the Acceptor Pattern

Structure of the Acceptor Pattern



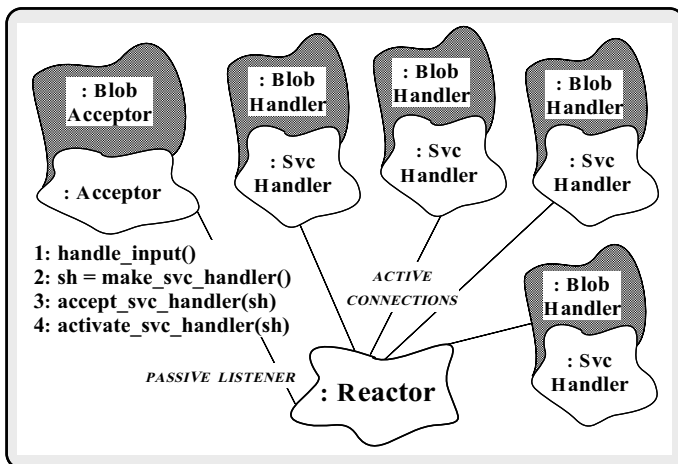
49



- Acceptor is a factory that creates, connects, and activates a Svc_Handler

50

Using the Acceptor Pattern in the Blob Server



51

The Acceptor Class

- The Acceptor class implements the Acceptor pattern

```

// Reusable Factor
template <class SVC_HANDLER>
class Acceptor :
    public Service_Object // Subclass of Event_Handler.
{
public:
    // Notified by Reactor when clients connect.
    virtual int handle_input (void)
    {
        // The strategy for initializing a SVC_HANDLER.
        SVC_HANDLER *sh = new SVC_HANDLER;
        peer_acceptor_.accept (*sh);
        sh->open ();
    }
    // ...

protected:
    // IPC connection factory.
    SOCK_Acceptor peer_acceptor_;
}
  
```

52

The Blob_Acceptor Class Interface

- The Blob_Acceptor class accepts connections and initializes Blob_Handlers

```
class Blob_Acceptor
: public Acceptor<Blob_Handler>
// Inherits handle_input() strategy from Acceptor.
{
public:
// Called when Blob_Acceptor is dynamically linked.
virtual int init (int argc, char *argv);

// Called when Blob_Acceptor is dynamically unlinked.
virtual int fini (void);
}
```

53

The Service Configurator Pattern

- Intent*

- “Decouples the behavior of communication services from the point in time at which these services are configured into an application or system”

- This pattern resolves the following forces for highly flexible communication software:

- How to defer the selection of a particular type, or a particular implementation, of a service until very late in the design cycle

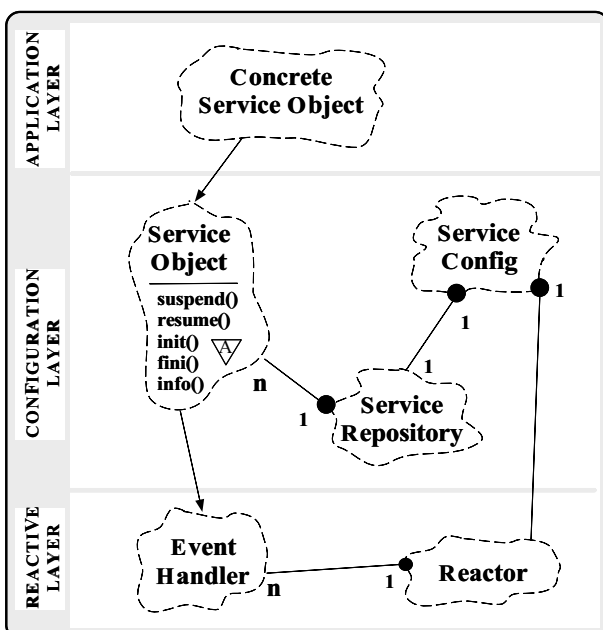
▷ i.e., at installation-time or run-time

- How to build complete applications by composing multiple independently developed services

- How to optimize, reconfigure, and control the behavior of the service at run-time

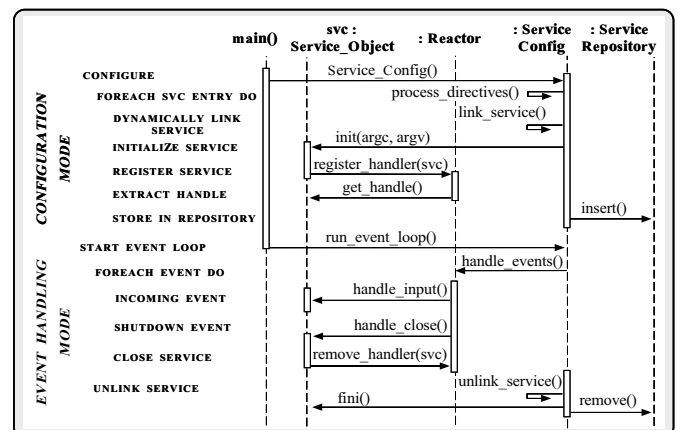
54

Structure of the Service Configurator Pattern



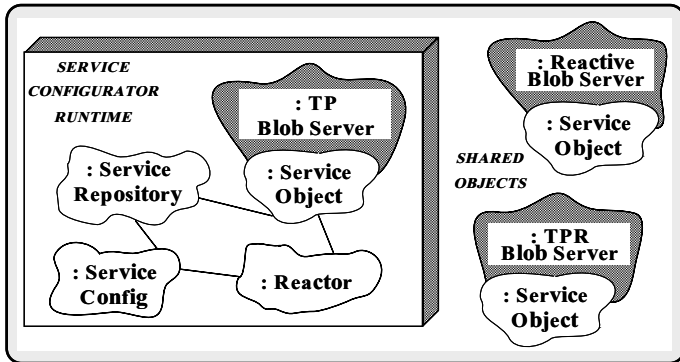
55

Collaboration in the Service Configurator Pattern



56

Using the Service Configurator Pattern in the Blob Server



- Existing service is based on Half-Sync/Half-Async pattern
- Other versions could be single-threaded or use other concurrency strategies...

57

The Blob_Acceptor Class Implementation

```

// Initialize service when dynamically linked.
int Blob_Acceptor::init (int argc, char *argv[])
{
    Options::instance ()->parse_args (argc, argv);

    // Set the endpoint into listener mode.
    Acceptor::open (local_addr);

    // Initialize the communication endpoint.
    Reactor::instance ()->register_handler
        (this, READ_MASK)
}

// Terminate service when dynamically unlinked.

int Blob_Acceptor::fini (void)
{
    // Unblock threads in the pool so they will
    // shutdown correctly.
    Blob_Processor::instance ()->close ();

    // Wait for all threads to exit.
    Thread_Manager::instance ()->wait ();
}
  
```

58

Configuring the Blob Server with the Service Configurator

- The concurrent Blob Server is configured and initialized via a configuration script

```

% cat ./svc.conf
dynamic TP_Blob_Server Service_Object *
    blob_server.dll:make_TP_Blob_Server()
    "-p $PORT -t $THREADS"
  
```

- Factory function that dynamically allocates a Half-Sync/Half-Async Blob_Server object

```

extern "C" Service_Object *make_TP_Blob_Server (void);

Service_Object *make_TP_Blob_Server (void)
{
    return new Blob_Acceptor;
    // ACE dynamically unlinks and deallocates this object.
}
  
```

59

Main Program for Blob Server

- Dynamically configure and execute the Blob Server

– Note that this is totally generic!

```

int main (int argc, char *argv[])
{
    Service_Config daemon;

    // Initialize the daemon and dynamically
    // configure the service.
    daemon.open (argc, argv);

    // Loop forever, running services and handling
    // reconfigurations.

    daemon.run_event_loop ();

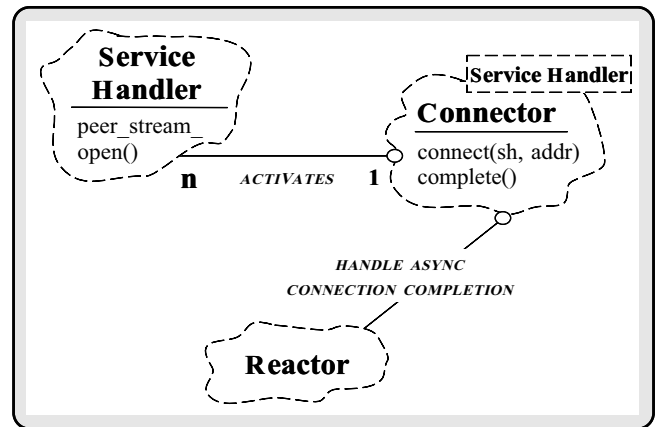
    /* NOTREACHED */
}
  
```

60

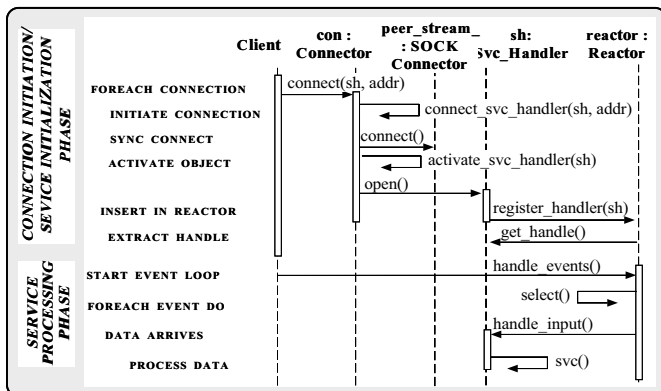
The Connector Pattern

- *Intent*
 - “Decouples active initialization of a service from the task performed once a service is initialized”
- This pattern resolves the following forces for network clients that use interfaces like sockets or TLI:
 1. How to reuse active connection establishment code for each new service
 2. How to make the connection establishment code portable across platforms that may contain sockets but not TLI, or vice versa
 3. How to enable flexible service concurrency policies
 4. How to actively establish connections with large number of peers efficiently

Structure of the Connector Pattern

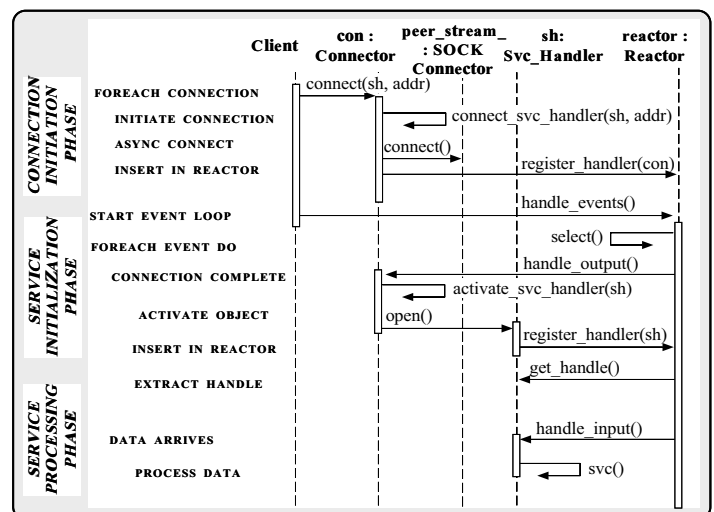


Collaboration in the Connector Pattern



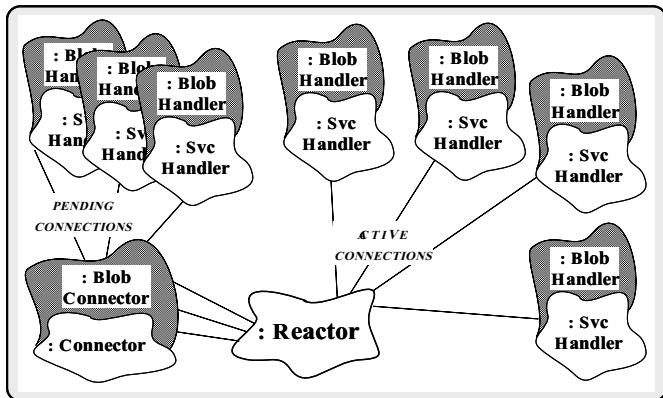
- Synchronous mode

Collaboration in the Connector Pattern



- Asynchronous mode

Using the Connector in the Blob Clients



65

Benefits of Design Patterns

- *Design patterns enable large-scale reuse of software architectures*
- *Patterns explicitly capture expert knowledge and design tradeoffs*
- *Patterns help improve developer communication*
- *Patterns help ease the transition to object-oriented technology*

66

Drawbacks to Design Patterns

- *Patterns do not lead to direct code reuse*
- *Patterns are deceptively simple*
- *Teams may suffer from pattern overload*
- *Patterns are validated by experience and discussion rather than by automated testing*
- *Integrating patterns into a software development process is a human-intensive activity*

67

Suggestions for Using Patterns Effectively

- *Do not recast everything as a pattern*
 - *Instead, develop strategic domain patterns and reuse existing tactical patterns*
- *Institutionalize rewards for developing patterns*
- *Directly involve pattern authors with application developers and domain experts*
- *Clearly document when patterns apply and do not apply*
- *Manage expectations carefully*

68

Books and Magazines on Patterns

• Books

- Gamma et al., “Design Patterns: Elements of Reusable Object-Oriented Software” Addison-Wesley, Reading, MA, 1994.
- “Pattern Languages of Program Design,” editors James O. Coplien and Douglas C. Schmidt, Addison-Wesley, Reading, MA, 1995

• Special Issues in Journals

- “Theory and Practice of Object Systems” (guest editor: Stephen P. Berczuk)
- “Communications of the ACM” (guest editors: Douglas C. Schmidt, Ralph Johnson, and Mohamed Fayad)

• Magazines

- C++ Report and Journal of Object-Oriented Programming, columns by Coplien, Vlissides, and De Souza

69

Conferences and Workshops on Patterns

• 1st EuroPloP

- July 10–14, 1996, Kloster Irsee, Germany

• 3rd Pattern Languages of Programs Conference

- September 4–6, 1996, Monticello, Illinois, USA

• Relevant WWW URLs

<http://www.cs.wustl.edu/~schmidt/jointPloP-96.html/>
<http://st-www.cs.uiuc.edu/users/patterns/patterns.html>

70

Obtaining ACE

- The ADAPTIVE Communication Environment (ACE) is an OO toolkit designed according to key network programming patterns

- All source code for ACE is freely available

- Anonymously ftp to [wuarchive.wustl.edu](ftp://wuarchive.wustl.edu)
- Transfer the files `/languages/c++/ACE/*.gz` and `gnu/ACE-documentation/*.gz`

- Mailing lists

- * ace-users@cs.wustl.edu
- * ace-users-request@cs.wustl.edu
- * ace-announce@cs.wustl.edu
- * ace-announce-request@cs.wustl.edu

- WWW URL

- <http://www.cs.wustl.edu/~schmidt/ACE.html>

71